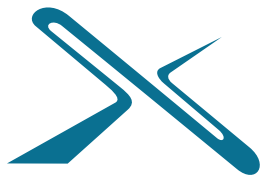
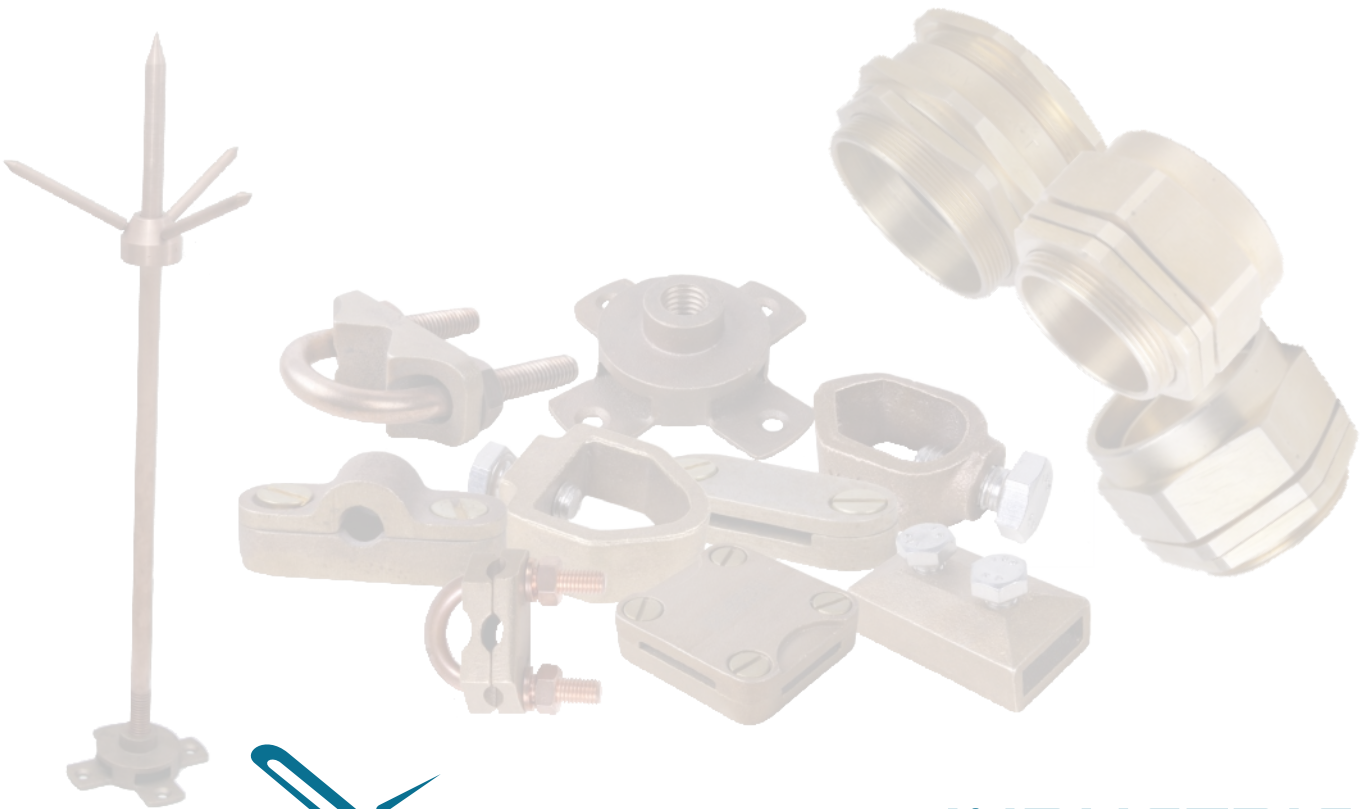


# EXAR INDUSTRIES

*Aspiring Excellence*

Electrical Accessories



**EXAR INDUSTRIES**  
*Aspiring Excellence*

AN ISO 9001:2008 COMPANY





<b>Company Profile</b>	04
<b>Cable Glands</b>	
A1 / A2 Industrial Cable Glands	05
BW Industrial Cable Glands	06
CW Industrial Cable Glands	07
E1W Industrial Cable Glands	08
Wipping Glands	09
<b>Earthing &amp; Lightning</b>	
Pure Copper Earth Rod & Acc.	11
Copper Bonded Steel Earth Rod & Acc.	12
Clamps And Fittings	13
Clamps And Bonds	14
Air Termination Rods & Acc.	15
Fittings	16
Earth Bus Bar	17
Conductors	19
<b>Quality Policy</b>	21
<b>Notes</b>	22



Exar Industries is a leading manufacturer of Cable Terminal Ends (Cable Lugs) & Electrical Accessories. Based in Ahmedabad, India Exar has gained reputation as one of the most reputed and reliable brands in Cable Lugs & Electrical Accessories. Exar products are widely accepted in power generation and distribution, transformers, switchgear, circuit breakers and many other application.

Exar's electrical accessories division offers Earthing materials, Lightning protection equipment, Copper busbars, Cable glands, Din rail, making it a one stop solution for the customers.

Founded by first generation entrepreneurs, the corporate leadership of the company is young and poised to lead the company to greater heights. Exar is backed by technocrats with in-depth knowledge and years of experience in the electrical industry.

We constantly strive to, develop better products, seek more efficient ways to do business, whether it is by implementing cutting-edge technology, increasing the number of services we provide, or expanding our network.

Exar Industries transition from a small company to what we are today is due to our passion for excellence. Our constant emphasis on continuous improvement is the reason for past achievements, the foundation for future success and the values which make us the right choice for you today. Exar is backed by state of the art infrastructure with a dedicated and diligent work force. At Exar, we follow modern and best production processes to achieve optimal result. Our wide distribution network of suppliers and distributors ensures prompt, safe and smooth delivery of the product to the customers.

### Core Values

Core values of Exar Industries are influenced by our past, tempered by our present and are designed to shape our future. They are an amalgam of what we have been, what we are and what we want to be.

### Team Work

Exar Industries believe in teamwork and we attribute our prosperity to the efforts of our employees. Their commitment, efficiency, hard work and dedication have helped us expand its scope. Our team or our extended family also includes our channel partners and users. Extra care is taken to ensure that their specific needs are met.

### Company Mission

To be the most trusted partner of our customers by providing quality products and outstanding services. To lead by innovation, excel by expertise and emerge as the foremost Indian industrial enterprise with a global recognition.

### Company Vision

Exar aspires to be a Global Leader in the Cable Terminal Ends (Cable Lugs), Connectors & Electrical Accessories segment.

## A1 / A2 Industrial Cable Glands



Cable Gland Size	Cable Diameter		Cable Gland Dimension			Part No.
			Thread		Gland Diameter Across Corners	
	Min	Max	Size	Length		
20S	8.0	11.5	20	10	26.50	EXA2-20S
20	11.0	13.5	20	10	28.50	EXA2-20
25	13.0	19.5	25	10	40.00	EXA2-25
32	19.0	25.5	32	10	45.50	EXA2-32
40	25.0	32.0	40	15	55.50	EXA2-40
50S	31.5	37.0	50	15	61.00	EXA2-50S
50	36.5	43.0	50	15	67.50	EXA2-50
63S	42.5	50.0	63	15	78.20	EXA2-63S
63	48.5	55.0	63	15	84.20	EXA2-63
75S	54.5	61.0	75	15	90.50	EXA2-75S
75	60.5	67.0	75	15	94.00	EXA2-75

\* All dimensions are in mm

### Technical Data

- Manufactured as per BS 6121 Part I 1989
- Manufactured of high quality brass
- Thermoplastic Elastomeric Rubber Gasket as seal material
- Cable outer sheath sealing by displacement technique
- Used for all types of unarmoured cables, plastic or rubber sheathed cables



## BW Industrial Cable Glands



Cable Gland Size	Cable Dimension			Cable Gland Dimension			Part No.
	MAX		Armour Wire Dia.	Thread		Gland Diameter Across Corners	
	U.A.D.	O.D.		Size	Length		
20S	11.6	15.8	0.9/1.25	20	10	25.5	EXBW-20S
20	13.9	20.8	0.9/1.25	20	10	27.6	EXBW-20
25	19.9	27.2	1.25/1.60	25	10	38.5	EXBW-25
32	26.2	33.5	1.6/2.0	32	10	45.5	EXBW-32
40	32.1	39.9	1.6/2.0	40	15	54.0	EXBW-40
50S	38.1	46.3	2.0/2.5	50	15	61.0	EXBW-50S
50	44	52.6	2.0/2.5	50	15	67.5	EXBW-50
63S	50	58.9	2.5	63	15	78.2	EXBW-63S
63	55.9	65.3	2.5	63	15	84.2	EXBW-63
75S	61.9	71.6	2.5	75	15	95.5	EXBW-75S
75	67.9	78	2.5	75	15	102.0	EXBW-75

\* All dimensions are in mm

### Technical Data

- Manufactured as per BS 6121 Part I 1989
- Manufactured of high quality brass
- Used for all types of steel wire armoured cables and are used in indoor application.

## CW Industrial Cable Glands



Cable Gland Size	Cable Dimension			Cable Gland Dimension			Part No.
	MAX		Armour Wire Dia.	Thread		Gland Diameter Across Corners	
	U.A.D.	O.D.		Size	Length		
20S	11.6	15.8	0.9/1.25	20	10	25.5	EXCW-20S
20	13.9	20.8	0.9/1.25	20	10	27.6	EXCW-20
25	19.9	27.2	1.25/1.60	25	10	38.5	EXCW-25
32	26.2	33.5	1.6/2.0	32	10	45.5	EXCW-32
40	32.1	39.9	1.6/2.0	40	15	54.0	EXCW-40
50S	38.1	46.3	2.0/2.5	50	15	61.0	EXCW-50S
50	44	52.6	2.0/2.5	50	15	67.5	EXCW-50
63S	50	58.9	2.5	63	15	78.2	EXCW-63S
63	55.9	65.3	2.5	63	15	84.2	EXCW-63
75S	61.9	71.6	2.5	75	15	95.5	EXCW-75S
75	67.9	78	2.5	75	15	102.0	EXCW-75

\* All dimensions are in mm

### Technical Data

- Manufactured as per BS 6121 Part I 1989
- Manufactured of high quality brass
- Thermoplastic Elastomeric Rubber Gasket as seal material
- Cable sealing by compression technique
- Used for all types of steel wire armoured cables and are used in outdoor application.



## E1W Industrial Cable Glands



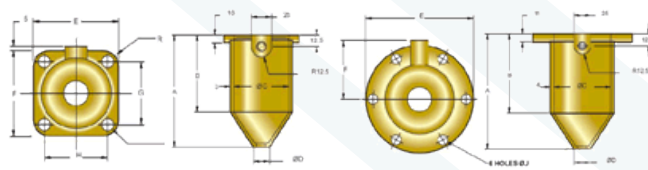
Cable Gland Size	Cable Dimension			Cable Gland Dimension			Part No.
	MAX		Armour Wire Dia.	Thread		Gland Diameter Across Corners	
	U.A.D.	O.D.		Size	Length		
20S	11.6	15.8	0.9/1.25	20	10	25.5	EXEW-20S
20	13.9	20.8	0.9/1.25	20	10	27.6	EXEW-20
25	19.9	27.2	1.25/1.60	25	10	38.5	EXEW-25
32	26.2	33.5	1.6/2.0	32	10	45.5	EXEW-32
40	32.1	39.9	1.6/2.0	40	15	54.0	EXEW-40
50S	38.1	46.3	2.0/2.5	50	15	61.0	EXEW-50S
50	44	52.6	2.0/2.5	50	15	67.5	EXEW-50
63S	50	58.9	2.5	63	15	78.2	EXEW-63S
63	55.9	65.3	2.5	63	15	84.2	EXEW-63
75S	61.9	71.6	2.5	75	15	95.5	EXEW-75S
75	67.9	78	2.5	75	15	102.0	EXEW-75

\* All dimensions are in mm

### Technical Data

- Manufactured as per BS 6121 Part I 1989
- Manufactured of high quality brass
- Thermoplastic Elastomeric Rubber Gasket as seal material, seals our cable sheath and inner cable bedding
- Cable sealing by compression technique
- Used for all types of steel wire armoured cables and are used in outdoor application.

## Wiping Glands



Exar Industries Wiping Glands are made of very high quality brass. The wiping glands are available in various sizes and are used in transformers & switch gear panels.

Wiping Glands are special type of Glands used for terminating cables to transformer. Wiping Glands are made of high quality brass, employing sand casting technique. Wiping glands can connect a large range of cables.

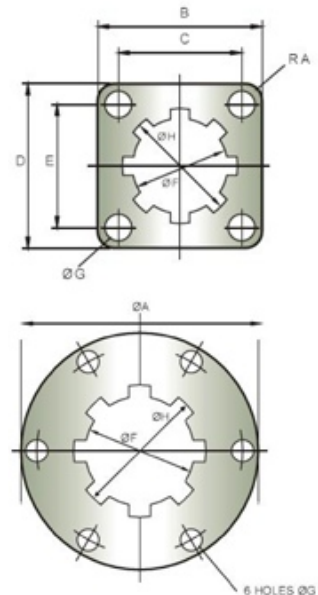
Gland Size	Cable O.D. mm	Wiping Gland Dimension										Part No.
		A	B	C	D	E	F	G	H	J	R	
X	12-51	137	90	60	19	90	90	66	66	12	12	EXWG-X
Y	25-78	155	95	89	32	144	123	95	86	14	14	EXWG-Y
Z	25-94	195	140	108	32	190	100	-	-	14	-	EXWG-Z

\* All dimensions are in mm

## Insulating Plates

Material : Epoxy Resin

Insulating Plate	Dimension mm							
	A	B	C	D	E	F	G	H
PX	12	90	66	90	66	48	16	60
PY	14	114	86	123	95	75	16	91
PZ	190	-	-	-	-	90	19	108

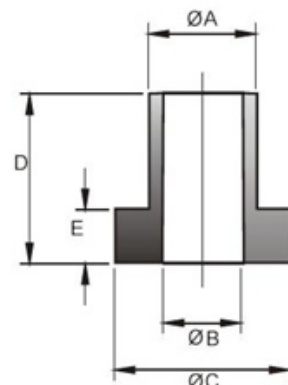


## Insulating Bush

Material : Neoprene

Insulating Bush	Dimension mm				
	A	B	C	D	E
A	15	11.2	22	28	10
B	18	14	28	28	10

Gland Size	Insulating Plate	Insulating Bush
X	PX	A
Y	PY	B
Z	PZ	B

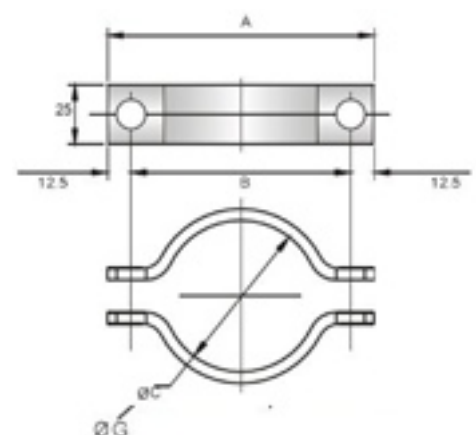


## Armour Clamp

Material : M.S. Strip

Finish : Hot Dipped Galvanised to BS 729

Gland Size	Dimension mm		
	A	B	C
X	143	118	73
Y	171	146	103
Z	209	185	123



## Pure Copper Earth Rods & Accessories

Pure copper earth rods are made of electrolytic copper. The Earth Rods are hard drawn from extruded copper bars. Pure copper earth rods are preferred where soil conditions are very aggressive & corrosive. The rods are threaded internally to make it extensible for deep driving with the help of couplers.



Earth Rod Dia	Length	Thread	Part No.
15mm	1200mm	M10	EXPCER-15-1.2
15mm	1500mm	M10	EXPCER-15-1.5
15mm	2400mm	M10	EXPCER-15-2.4
16mm	1200mm	M10	EXPCER-16-1.2
16mm	1500mm	M10	EXPCER-16-1.5
16mm	2400mm	M10	EXPCER-16-2.4
20mm	1200mm	M10	EXPCER-20-1.2
20mm	1500mm	M10	EXPCER-20-1.5
20mm	2400mm	M10	EXPCER-20-2.4

\* Other sizes available on request.

### Coupling



Thread Dia	Length	Material	Part No.
M10	40mm	Brass	EXCD-10

### Driving Head



Thread Dia	Part No.
M10	EXDH-10

### Driving Spike



Thread Dia	Part No.
M10	EXDS-10

## Copper Bonded Steel Earth Rod And Accessories

Copper bonded steel earth rods are the most commonly used earth electrode. They are suitable for most application, compatible for deep driving & are economical. Copper bonded steel earth rods are made by molecularly bonding 99.9% pure copper onto high carbon, low tensile steel rods.



Thread Size	Length	Rod Dia	Part No.
5/8"	1200mm	13.70mm	EXCBSER-58-1.2
5/8"	1500mm	13.70mm	EXCBSER-58-1.5
5/8"	1800mm	13.70mm	EXCBSER-58-1.8
5/8"	2400mm	13.70mm	EXCBSER-58-2.4
5/8"	3000mm	13.70mm	EXCBSER-58-3.0
3/4"	1200mm	16.70mm	EXCBSER-34-1.2
3/4"	1500mm	16.70mm	EXCBSER-34-1.5
3/4"	1800mm	16.70mm	EXCBSER-34-1.8
3/4"	2400mm	16.70mm	EXCBSER-34-2.4
3/4"	3000mm	16.70mm	EXCBSER-34-3.0

\* Other sizes available on request.

\*\* We provide upto 250 micron copper coating on earth rods

\*\*\* Actual size may vary by +/- 5%

### Coupler



Thread Dia	Material	Part No.
5/8"	Brass	EXC-58
3/4"	Brass	EXC-34

\* Other sizes available on request.

\*\* Coupler available in other materials,  
Phosphour Bronze / Silicon Bronze / Gunmetal

### Driving Head



Thread Dia	Material	Part No.
5/8"	Steel	EXDH-58
3/4"	Steel	EXDH-34

\* Other sizes available on request.

## Clamps And Fittings

### Rod to Tape Clamp ( Type A )



Size	Material	Part No.
26 x 12mm	Gunmetal	EXA-2612
31 x 12mm	Gunmetal	EXA-3112
40 x 10mm	Gunmetal	EXA-4010
51 x 8mm	Gunmetal	EXA-5108

### U Bolt Rod Clamp ( Type GUV )



Size	Material	Part No.
16-70Sqmm	Gunmetal	EXGUV-1670
70-185Sqmm	Gunmetal	EXGUV-70185
150-300Sqmm	Gunmetal	EXGUV-150300

### Rod to Tape Clamp ( Type G )



Size	Material	Part No.
1/2"	Gunmetal	EXG-12
5/8"	Gunmetal	EXG-58
3/4"	Gunmetal	EXG-34
1"	Gunmetal	EXG-1.0

### PUB Type Clamp



Size	Material	Part No.
5/8"	Gunmetal	EXPUB-58
3/4"	Gunmetal	EXPUB-34
1"	Gunmetal	EXPUB-1.0
1 1/2"	Gunmetal	EXPUB-1.5
2"	Gunmetal	EXPUB-2.0
2 1/2"	Gunmetal	EXPUB-2.5
3"	Gunmetal	EXPUB-3.0
4"	Gunmetal	EXPUB-4.0

### U Bolt Rod Clamp ( Type E )



Size	Material	Part No.
16mm	Gunmetal	EXE-16
20mm	Gunmetal	EXE-20
25mm	Gunmetal	EXE-25
31mm	Gunmetal	EXE-31
38mm	Gunmetal	EXE-38
50mm	Gunmetal	EXE-50

Note:

\* Clamps are available in Brass also.

\*\* Choice of fastners & U bolt include MS / Brass / SS



## Clamps And Bonds

B Bond



Size	Material	Part No.
25 x 3mm	Gunmetal	EXBB-253

Screw Down Test Clamp



Size	Material	Part No.
26 x 8mm	Gunmetal	EXSDTC-2608

Rain Water Pipe Bond



Size	Material	Part No.
26mm	Gunmetal	EXRWB-26

WaterMain Bond



Size	Material	Part No.
26mm	Gunmetal	EXWMB-26

Tower Earth Clamp



Size (Sqmm)	Material	Part No.
16-70	Gunmetal	EXTEC-1670
70-120	Gunmetal	EXTEC-70120
120-185	Gunmetal	EXTEC-120185
185-240	Gunmetal	EXTEC-185240
240-300	Gunmetal	EXTEC-240300

Earth Bonding Point



Size	Material	Part No.
1Hole	Gunmetal	EXEBP-01
2Hole	Gunmetal	EXEBP-02
4Hole	Gunmetal	EXEBP-03

Tee Clamp



Size	Material	Part No.
8mm	Gunmetal	EXTC-08

Water Pipe Clamp



Size	Material	Part No.
1/2" - 1"	Gunmetal	EXWPC-01
1" - 2"	Gunmetal	EXWPC-02
2" - 4"	Gunmetal	EXWPC-04
4" - 6"	Gunmetal	EXWPC-06

Plate Type Test Clamp



Size	Material	Part No.
26 x 15mm	Gunmetal	EXPTC-2615

## Air Termination Rods & Accessories

Air termination rods are made of pure copper. The rods are made with a tapered tip and is always installed on the top portion of the facility to be protected. Air termination rods arrest or attract the lightning strike and guide the energy to ground. Air termination rods are fixed on the building with the help of a base.



Size - Rod Length	Material	Part No.
15 x 300mm	Copper	EXTPR-15-0.3
15 x 500mm	Copper	EXTPR-15-0.5
15 x 1000mm	Copper	EXTPR-15-1.0
15 x 1500mm	Copper	EXTPR-15-1.5
15 x 2000mm	Copper	EXTPR-15-2.0

### Air Terminal Base



Size	Material	Part No.
16mm	Gunmetal	EXATB-16
20mm	Gunmetal	EXATB-20

### Flat Saddle



Size	Material	Part No.
16mm	Gunmetal	EXFS-16
20mm	Gunmetal	EXFS-20

### Multiple Point



Size	Material	Part No.
16mm	Copper	EXMP-16

### Ridge Saddle



Size	Material	Part No.
8mm	Gunmetal	EXRS-08

## Fittings

### D.C.Tape Clip



Size ( mm )	Material	Part No.
25 X 3	Gunmetal	EXDC-253
25 x 6	Gunmetal	EXDC-256
31 x 3	Gunmetal	EXDC-313
31 x 6	Gunmetal	EXDC-316
50 x 3	Gunmetal	EXDC-503
50 x 6	Gunmetal	EXDC-506

### Square Tape Clamp



Size ( mm )	Material	Part No.
25 x 3mm	Gunmetal	EXSTC-253
25 x 6mm	Gunmetal	EXSTC-256
31 x 3mm	Gunmetal	EXSTC-313
50 x 3mm	Gunmetal	EXSTC-503
50 x 6mm	Gunmetal	EXSTC-506

### Oblong Test Clamp



Size ( mm )	Material	Part No.
26 X 8	Gunmetal	EXOTC-268

### Square Conductor



Size	Material	Part No.
50Sq.mm	Gunmetal	EXSCS-50
70Sq.mm	Gunmetal	EXSCS-70
95Sq.mm	Gunmetal	EXSCS-95

### Heavy Duty Cable



Size	Material	Part No.
50Sq.mm	Gunmetal	EXHCS-50
70Sq.mm	Gunmetal	EXHCS-70
95Sq.mm	Gunmetal	EXHCS-95

### Test Clamp



Size	Material	Part No.
50Sq.mm	Gunmetal	EXTC-50
70Sq.mm	Gunmetal	EXTC-70
95Sq.mm	Gunmetal	EXTC-95

## Earth Bus Bar

Exar earth bus bars are made of hard drawn copper bars (50x6mm) fitted onto a base through insulator. This is used as a junction for earth points in a facility.

### Earth Bus Bar

MOC : Hard Drawn Copper Bar 50x6 mm

Earth Bus Bars are used as a junction for earth points.



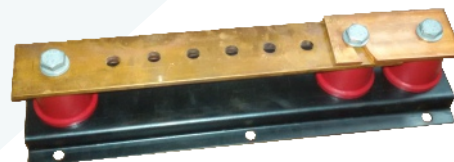
No. of Earth Terminations	Length mm	Part No.
6 way	400	EXBB 006
8 way	500	EXBB 008
10 way	650	EXBB 010
12 way	750	EXBB 012

### Earth Bus Bar with Single Disconnecting Link

MOC : Hard Drawn Copper Bar 50x6 mm

Earth Bus Bars are used as a junction for earth points. Additionally a disconnecting link is provided to allow inspection in the earth line.

No. of Earth Terminations	Length mm	Part No.
6 way	400	EXBB 106
8 way	500	EXBB 108
10 way	650	EXBB 110
12 way	750	EXBB 112



### Earth Bus Bar with Double Disconnecting Link MOC : Hard Drawn Copper Bar 50x6 mm

Earth Bus Bars are used as a junction for earth points. Additionally two disconnecting links are provided to allow inspection in the earth line.



No. of Earth Terminations	Length mm	Part No.
6 way	400	EXBB 206
8 way	500	EXBB 208
10 way	650	EXBB 210
12 way	750	EXBB 212

### Disconnecting Link MOC : Hard Drawn Copper Bar 50x6 mm

Disconnecting Link is used for isolation of an earth connection for inspection.

Length mm	Part No.
125	EXBBDL



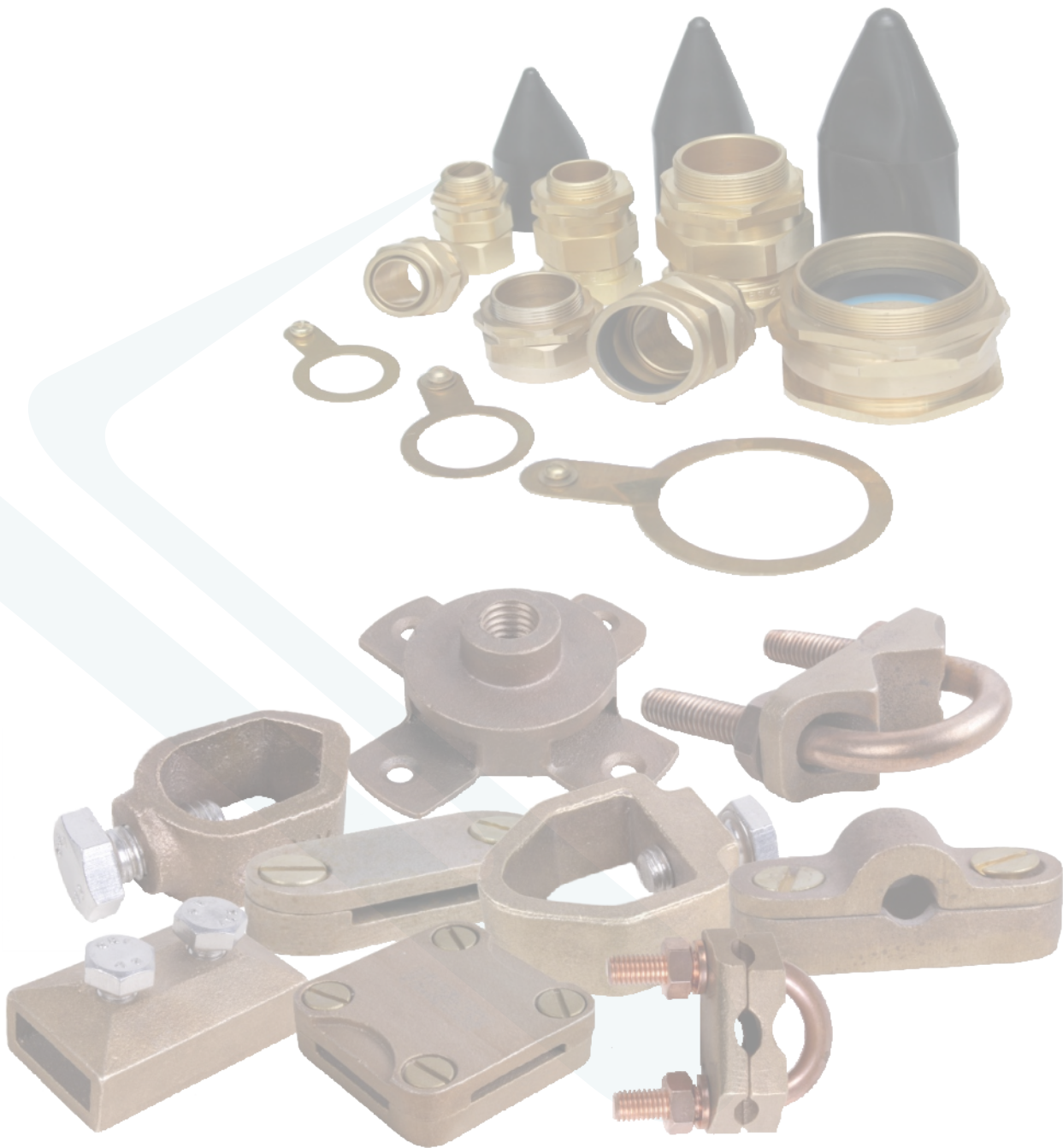
## Earthing Conductor

Earthing Conductors are made of pure copper and used for transferring the electrical energy from lightning or short circuit to the earthing system.



Size	Material	Part No.
25 x 3mm	Copper	EXCT-253
25 x 6mm	Copper	EXCT-256
31 x 3mm	Copper	EXCT-313
50 x 3mm	Copper	EXCT-503
50 x 6mm	Copper	EXCT-506







Customer satisfaction has always been the first and foremost priority at Exar. Right from procurement of raw material till dispatch, special care is taken to ensure that the customer gets high quality products at a competitive price. The products are tested and certified by qualified professionals at each step of the production process, thereby ensuring premium quality. Our commitment to quality does not end with the production process. Special care is taken to ensure customer satisfaction by taking regular customer inputs and feedbacks.

The philosophy at Exar is to achieve excellence in all walks of the process and thereby achieving total customer satisfaction.

The prime focus of our company is to deliver quality products to our customers. Quality is rigorously checked for different parameters and the procurements and tests are conducted under the strict supervision. From raw material to final product packing, various attributes are checked under vigilance of expert supervisors.

Exar is backed by state of the art infrastructure with a dedicated and diligent work force. At Exar, we follow modern and best production processes to achieve optimal result. Our wide distribution network of suppliers and distributors ensures prompt, safe and smooth delivery of the product to the customers.





AUTHORISED DEALER

#251, Koilee Talavdi, Nr. G.E.B. Office, Opp. Sangam Residency, Narol, Ahmedabad 382 405, Gujarat, India  
Phone : +91 99250 25 821 | E-mail : [info@exarindustries.com](mailto:info@exarindustries.com) | Web : [www.exarindustries.com](http://www.exarindustries.com)